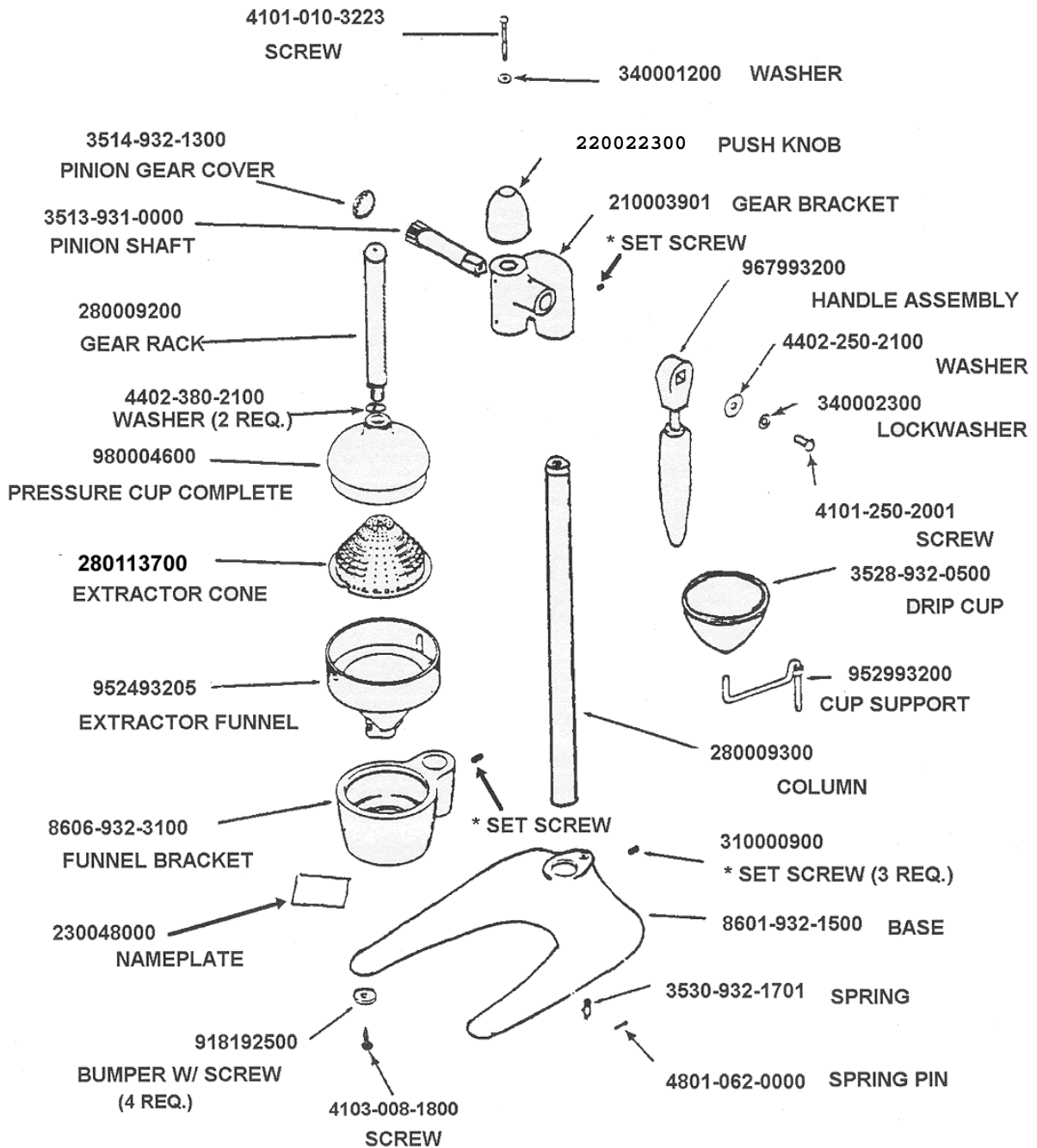


932 Manual Juice Extractor - Assembly



Hamilton Beach Commercial

2

July 2002 Rev. E

932 Manual Juice Extractor Technical Information

Recommended Parts List

- Extractor Funnel
- Extractor Cone
- Pressure Cup
- Funnel Bracket / Nameplate
- Gear Rack
- Gear Bracket
- Pinion Shaft
- Drip Cup
- Cup Support

Tech Tips

Gear Rack Conversion

- Older units with the “square” gear rack can be converted to use currently available parts.
- When replacing an old model gear rack with the current “rounded” gear rack (280009200), you must also replace the pressure cup (980004600) and the gear bracket (210003901).

Defects

- **Symptom:** Handle difficult to pull down / sticking.
- **Defect:**
 - Gear bracket / rack not aligned over extractor bracket / cone. Align bracket / rack by sighting down the length of the unit from above.
 - Excessive food / juice contamination in the gear bracket / rack. Disassemble juicer and clean appropriately.
 - Pinion gear / gear rack missing teeth, inspect and replace.

Warranty

- The 932 juicer is under warranty from manufacturer defect for 2 years from the date of purchase.
- Cases of unit failure due to customer abuse / misuse will not be covered under warranty.